



Are you looking for a way to get more involved in your community? Run for a Director position with the Green Trails Improvement Association (GTIA). GTIA is your homeowners association. The GTIA board consists of 15 directors – one per area – who are tasked with the job of keeping Green Trails’ common areas beautiful. Becoming a board member offers a unique volunteer opportunity to make a visible difference in your community.

This year, 6 of the 15 Board of Directors positions are up for election. At the beginning of October, an election ballot is sent to every homeowner in the areas up for election. If you don’t know the area in which you reside, check the mailing label on the back of this newsletter. Areas are referenced by the letters A through O.

The following areas in Green Trails will conduct an election for their GTIA Board of Directors representative for the duration of the designated term:

3 Year

Area F	Collegewood, Huntington Woods, Woodglenn lots 1 to 31	Nov. 2012
Area G	Promenades	Nov. 2012
Area I	Surrey Ridge 1	Nov. 2012
Area J	Surrey Ridge 2, Bloomfield	Nov. 2012
Area O	Green Trails Apartments	Nov. 2012

2 Year

Area M	High Point Condos	Nov.2011
--------	-------------------	----------

Anyone interested in seeking one of these positions must be a unit owner in the area represented. In order to have your name placed on the official ballot, please fill out the application on page 2 and send it to JRM Properties, Inc., P.O. Box 3106, Lisle, IL 60532-8106. Or, you can send an e-mail to [gtia@comcast.net](mailto:gtia@comcast.net). All candidate applications must be received no later than 5:00 p.m. on September 8, 2009.

*Please see "Get Involved" cont. on page 2.*

# Get Involved *(continued from page 1)*

What does GTIA do?

GTIA's main responsibility is to maintain 16 of the 26 miles of paths that wind their way through the Green Trails subdivision. The other 10 miles are maintained primarily by the Lisle Park District. GTIA also maintains 198 lights along those 16 miles of trails and maintains the areas around the 5 Green Trails welcome signs. GTIA operated on an approximate budget of \$400,000 for 2009.



What do board members do?

Board members meet in the evenings on the 2nd Tuesday of each month. Meetings typically are held at Kennedy Junior High, but the location may vary. Any changes in location are printed in the Pathfinder newsletter and on the home page of the website ([www.greentrails.org](http://www.greentrails.org)) before the meeting. The meetings can last anywhere from 30 minutes to 2 hours. Board members also serve on committees where their talents can best be put to use. Committees may meet a few times per year.

Why are there so many openings for board members?

Typically, 5 board positions (one-third) are up for election each year. However, due to a lack of candidates in previous elections, some board members have been appointed to their positions. Appointed board members live in Green Trails, but do not necessarily live in the area that they represent.

These positions, therefore, are put up for election. If you live in an area whose position is not up for election and you want to be considered for an appointed position, please contact management.

If you would like to know more about what is involved in being a board member or need more information on becoming a candidate, please call management at 961-7456 or contact the current board member for your area. To see the Board of Directors in action, come to one of our meetings at 7:30 p.m. on the second Tuesday of every month. Watch the Pathfinder or check the website for information about the location of the next meeting. Your involvement makes a difference in Green Trails!

---

*One extends one's limits only by exceeding them.*

.....  
YES! I would like to be a candidate in the GTIA Board elections

Candidate for Area \_\_\_\_\_

Name \_\_\_\_\_

Address \_\_\_\_\_

Phone Number \_\_\_\_\_

GTIA Account Number \_\_\_\_\_

\*\*Please attach a paragraph or two describing yourself and your interest in this position.

I am a homeowner in good standing with the Green Trails Improvement Association

\_\_\_\_\_  
Candidate's Signature

Mail to: JRM Properties, Inc.  
P.O. Box 3106  
Lisle, IL 60532-8106

Must be received by 5:00 p.m. on September 8, 2009  
.....

## Summary of GTIA Board Meeting Minutes July 14, 2009 Pending Board Approval

President, Peter Bakas called the meeting to order at 7:40 PM at Lisle Village Hall. Board members present: Peter Bakas, Marisa DeAngelis, Don Helgeson, Marg Hough, Gerry Jackson, Christy McGovern, Roxanne Nagel, Michael Olson. Board members excused: Pat Coughlin-Schillo, Rodd Elges, Linda Gilbert, Terri Kolman, Julie LaFond, Les Lavin. Board member absent: Rob Getz. Management: Joanne Broda. Paula Gleason was Recording Secretary. A quorum was not present until 8:10 PM, at which time Board motions were implemented.

**Open Forum:** None.

### Minutes of the Prior Meeting:

Minutes of the June meeting were reviewed.

**Board Motion:** Marg Hough moved to approve the June minutes, Don Helgeson seconded. The motion was passed by voice vote of 7, with 1 abstention.

### Treasurer's Report:

Don Helgeson reviewed the June Balance Sheet and Income and Expense Statement.

**Board Motion:** Gerry Jackson motioned to accept the revised check register expenditures of \$35,432.19 for July, Marisa DeAngelis seconded. The motion was passed by unanimous voice vote.

### Management Report:

Telephone log line items were reviewed.

Management noted receipt of six partial payments and one payment in full for delinquent assessments.

Management reported work has been successfully completed at the west sign accent area at Green Trails Drive and Naper.

Management stated that seal coating and crack filling are complete. Illini Suburban hopes to do the overlay project by 8/3; Kellogg Concrete hopes to start working on the trail work by 7/27.

Management requested approval of a resident's architectural control improvement application to plant a large bush in the common area behind his property to absorb excess water that accumulates in that area.

**Board Motion:** Gerry Jackson motioned to approve the architectural control improvement application as submitted, Michael Olson seconded. The motion was passed by a unanimous voice vote.

Management suggested that the Maintenance Committee research a drainage problem in the common area behind Wildwood Court and another persistent drainage problem at WV1068 and adjoining lots 69, 72 and 73.

(please see *Minutes continued on page 4*)

## Green Trails Improvement Association Board of Directors

**Peter Bakas** - President - Area N, TYN-APC  
**Leslie Lavin**, Vice President - Area E, WGL(W)  
**Don Helgeson**, Treasurer - Area B, HF1, OKS  
**Marisa DeAngelis**, Secretary - Area D, HF2, WGL (E)  
**Christy McGovern** - Area F, CWD, HTW, WGL 1-31  
**Roxanne Nagel** - Area M, HPT  
**Rob Getz** - Area A, HF3, 4&5  
**Marg Hough** - Area C, WV1,2,TLO  
**Linda Gilbert** - Area G, PRM  
**Pat Coughlin-Schillo** - Area H, GR1 &2, LWS, SR5  
**Gerald Jackson** - Area I, SR1  
**Terri Kolman** - Area J, SR2, BLM  
**Julie LaFond** - Area K, SR3, LW2  
**Rodd Elges** - Area L, SR4, LW1, AWC, CG apts.  
**Michael Olson** - Area O, GT apts.

Green Trails Pathfinder is a newsletter of the  
Green Trails Improvement Association

Board Meeting is on the second Tuesday of the month.

All Green Trails residents are welcome.

**NEXT MEETING: August 11, 2009**

7:30 p.m. Village of Lisle Board Room

### PROPERTY MANAGER JRM Properties, Inc.

P.O. Box 3106  
Lisle, IL 60532  
(630)961-7456  
Joanne Broda

Please call JRM Properties if  
you need information or have  
questions regarding Green Trails.

### Visit our Green Trails website at:

[www.greentrails.org](http://www.greentrails.org)

Or E-Mail us at:

[gtia@greentrails.org](mailto:gtia@greentrails.org)

### GTIA Yearly Assessment Policy

Assessments are paid annually. The billing for the new year's assessment will be mailed out no later than Nov. 29th. Payment is due Jan. 1st. If payment is not received by Feb. 1st, an administrative fee is added to the assessment. If an owner does not receive an invoice by Dec. 10th, notify management immediately. GTIA policy states the homeowner is responsible for paying on time, with or without the invoice. If your address has changed, or if you have any questions regarding your bill, call Joanne Broda at JRM Properties at 630-961-7456.

### SELLING? REFINANCING?

Anyone selling or refinancing within the Green Trails Improvement Association area should require a letter from JRM Properties, Inc., regarding their status of the yearly assessment charge. Requests for such may be called into the Management Office or requested by letter. Information to provide is as follows: 1) Property address; 2) Seller's attorney name and phone number; 3) Buyer's name; and 4) Date of closing. All this information will be required no less than 14 days prior to the close. If notice is given less than 14 days prior to closing, a \$25 fee will be assessed. JRM Properties, Inc. P.O. Box 3106, Lisle, IL 60532. Contact Joanne Broda, 630-961-7456.

Please read the box on the Classified page for instructions on how to submit an ad.  
Commercial ads should submit to address at right.

### EDITOR

Beth Haugeberg  
630-416-7693

E-Mail stories to:  
[pathfinderarticles@greentrails.org](mailto:pathfinderarticles@greentrails.org)

### For Commercial Ads Contact Pam Shuta

**ARBOR**

Printing & Graphics

5100 Academy Dr., Ste 100

Lisle, IL 60532

630-969-2277

---

# Woodglenn Park Improvements

The Lisle Park District will be developing the Woodglenn Park site on the corner of Trinity and Golfview Drives in 2010. Amenities in the proposed design include:

- Parking lot
- Pavilion with bathrooms
- Playground equipment
- Large open areas suitable for soccer fields
- Picnic grove
- Expanded natural areas with educational / interpretive signage
- Pathway connections to create a loop around the site
- Bicycle parking
- Small baseball / softball backstop

## **What is the project cost and how is this project being funded/will this affect my taxes?**

The \$1.1 million budget is being funded through the current balance in the park district's capital projects fund. Taxes will not be raised as a result of this project. The park district is also seeking a grant through the Illinois Department of Natural Resources that can fund up to \$400,000 of the project's cost.

## **How often will the fields be programmed?**

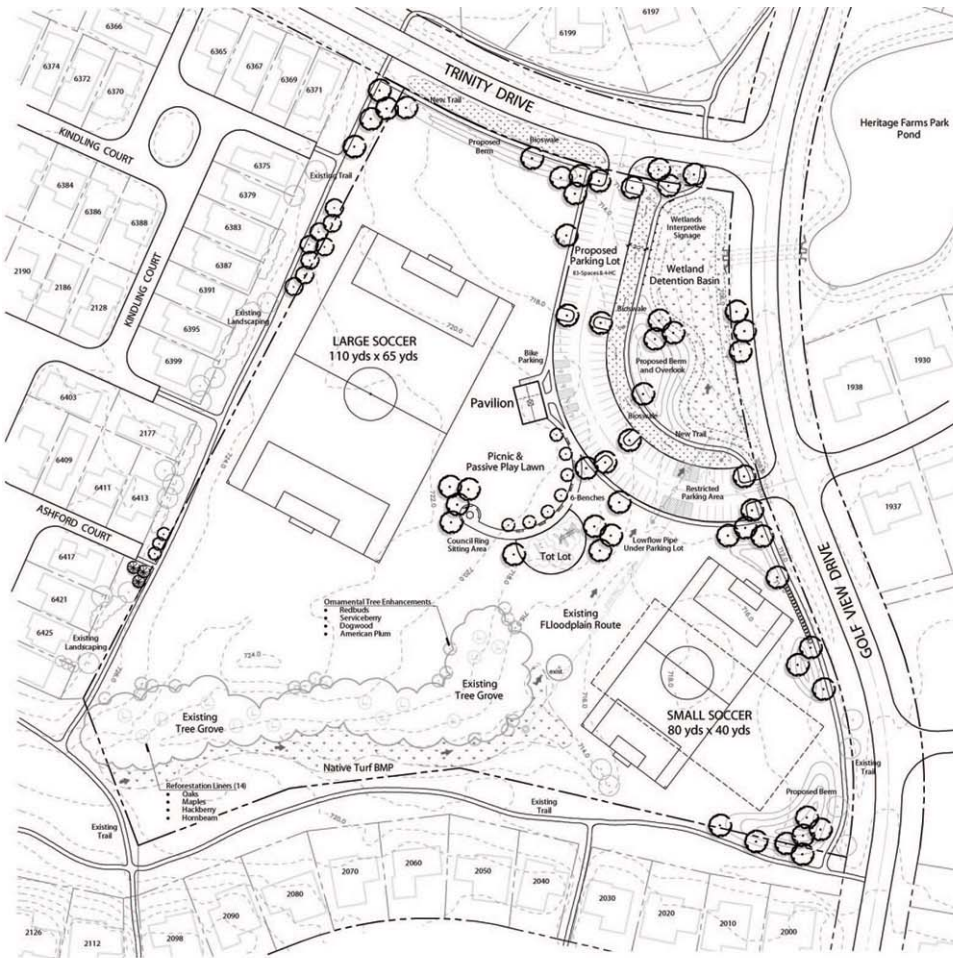
The park district's intent is to utilize Woodglenn Park to relieve the congestion currently imposed on other sites while maintaining the neighborhood feel that exists today. The use of Woodglenn Park, like all Lisle Park District parks and property, will be regulated in accordance with the Conduct Ordinance of the Lisle Park District. The park district staff and Board have met with a number of the park's neighbors and other residents and have developed the following guidelines that will help better communicate the intended programmed use of all park district parks with the exception of the lighted fields in Community Park. While at this time these guidelines have not been formalized, they have been generally agreed upon as being a reasonable attempt at establishing a balance between neighborhood use and programmed activity:

1. When issuing permits, staff will maintain at least one half hour between reservations. For example, if a permit were to be issued from 9 am to 11 am, the next available time slot would be from 11:30 am to 1:30 pm.
2. When scheduling soccer games, staff will allow for at least one half hour between start times. For example, 9 am to 10 am, 10:30 am to 11:30 am, 12 noon to 1 pm, etc.
3. When scheduling two games in the park at the same time, staff will maintain one half hour between games, but will also stagger start times. For example, 9 am to 10 am on "field 1", 9:15 to 10:15 on "field 2"; 10:30 am to 11:30 am on "field 1", 10:45 am to 11:45 am on "field 2"; etc.
4. When scheduling games or issuing permits, the park district will give priority in the following order:
  - a. Lisle Park District in-house programs
  - b. Local travel teams comprised of Lisle Park District residents
  - c. Outside teams
5. General park hours will be from dawn until dusk. However, when scheduling games or issuing permits, staff will honor the following hours of operation:
  - a. M-F 9 am until dusk
  - b. Sa 9 am until 6 pm
  - c. Su 10 am until 6 pm

For answers to more frequently asked questions, please refer to [www.lisleparkdistrict.org](http://www.lisleparkdistrict.org).

*(Please see Woodglenn Park on page 5.)*

# Design Plan for Woodglenn Park



Land Planning  
Landscape Architecture  
Environmental Site Design

## WOODGLENN PARK

GOLF VIEW & TRINITY DRIVE  
LISLE, ILLINOIS

### Conceptual Development Plan

LISLE PARK DISTRICT  
1825 SHORT STREET  
LISLE, IL 60532

Scale: 1" = 50'0"

North arrow

Legend:

- ▲ Public Meeting Comments
- ▲ Public Review
- ▲ For ZIC For Application Meeting

revisits:

original issue date: 10 JUNE 2009

drawn by: \_\_\_\_\_

checked by: \_\_\_\_\_

project no.: 29028

sheet no.: 1 of 1

“Minutes” (cont. from page 3)

Management noted that there was one new sale in June for the College Green apartment-condo conversion.

Management reported that there were no new sales in June in the Torrey Pines conversion.

Management provided a list of June 2009 newcomers. Board Directors are encouraged to call on newcomers in their respective areas.

**Finance Committee:** Don Helgeson noted that the Finance & Maintenance Committees will have a joint meeting at 7:00 PM, on Monday, July 27th, in the office of Management.

**Maintenance Committee:** No report

**Communications Committee:** No report

**Parks Committee:** In PatCoughlin-Schillo’s absence, Joanne Broda noted that Pat did email park evaluation forms to Board members. Evaluations should be completed and returned to Pat, with a copy to Management, prior to the August 11th Board meeting.

Roxanne Nagel will be attending the July 16th Park District Board meeting.

**Nominating Committee:** In Rob Getz’ absence, Joe Broda volunteered to write an article to submit to the Pathfinder relative to the five Board positions that will be coming available for the next election.

**Old Business/New Business:** None

**Board Member Area Reports:**

Area C – Marg Hough reported that the beds around the Gazebo are overgrown; and suggested ground cover would be attractive after the beds are cleaned out.

Area I – Gerry Jackson reported that the Naper/Abbeywood accent sign plant material is overgrown; needs trimming.

**Adjournment**

**Board Motion:** There being no further business, Gerry Jackson motioned to adjourn the meeting, Roxanne Nagel seconded. The motion was passed by a unanimous voice vote; the meeting was adjourned at 8:45 p.m.

Respectfully Submitted,

Paula Gleason, Recording Secretary, Signature on File

*Laughter is the medicine of life.*

## Lisle Park District August News

Visit <http://www.lisleparkdistrict.org> for more information

### Movies in the Park after Dark



FREE!

Location: Community Park Band Shelter

Are you looking for BIG screen entertainment for the whole family that is fun and affordable? Bring your blankets and lawn chairs for our free "Movie In The Park After Dark" series that is guaranteed to be a BIG

hit with everyone in your family. Our movie presentations will be shown on a 20' screen complete with special sound system. For your viewing comfort and convenience, restrooms will be available for your use. Mark your calendars now so that you don't miss these BIG events! Picnic baskets and coolers will be permitted. Visit [lisleparkdistrict.org](http://lisleparkdistrict.org) for more shows and times.

#### **The Dark Knight (PG-13)**

Tuesday, August 11 - 8pm

Location: Community Park Band Shell

### Down and Dirty Day

Thursday, August 13

1:30-2:30pm

Who says you can't play in the mud every once in a while? Come to the Meadows Center and get as dirty as you can! This is an event you won't want to miss. We'll organize egg throws, relay races and other sloppy activities that will have everyone talking for weeks! Wear old clothes and bring a pair of goggles to avoid mud in your eyes. Don't forget the plastic garbage bag for the way home! Hoses will be available onsite to help clean up the best we can!



### 2009 Concerts in the Park

Do you love Live music? Then come out to beautiful Community Park and enjoy great live music under the stars. All shows are all ages and FREE OF CHARGE! Don't forget chairs or blankets, only lawn seating is available. Picnic baskets and coolers will be permitted. All shows are held at the Community Park Band Shelter, 1825 Short Street.

### Bjorseth elected to NSA-IL Board

Green Trails resident, Lillian Bjorseth, was elected 2009-2010 director of communication for the National Speakers Association-Illinois Chapter (NSA-IL). She will oversee the group's public relations efforts including electronic and print media coverage and its [www.nsa-il.org](http://www.nsa-il.org) and [www.illinois-experts.com](http://www.illinois-experts.com) websites.

Lillian is a Lisle IL-based internationally known networking and relationship-building expert who helps others build social capital as a speaker, trainer, coach and author. The third edition of her bestseller, *Breakthrough Networking: Building Relationships That Last*, was released in 2009.

NSA-IL is the local chapter of National Speakers Association, the leading professional organization of experts in a variety of industries and disciplines who speak to audiences as trainers, educators, humorists, motivators, consultants and authors. For more information on NSA-IL, contact Sue Black at 630-208-0776 or [sueblack@nsa-il.org](mailto:sueblack@nsa-il.org).



### **One Foot In The Groove Tuesday, August 4 at 7:30pm**

One Foot In The Groove celebrates America's original classic rock art form. To them, classic depicts passing

the test of time. The music they play certainly aces that test. With a big dynamic sound featuring Chicago's finest journeymen, One Foot In The Groove surely won't disappoint.

### **Downtown Lisle Cruise Night**

Saturday, August 29, 2009, from 5:00 p.m. to 9:00 p.m., is cruise night in Lisle. Bring family and friends to beautiful downtown Lisle (on Main Street between Ogden and Burlington Avenues) for an evening of fun, food, and music.

Cruise Night will feature great music from the 50s and 60s, parking for over 100 pre-1983 American-made cars and trucks, trophies and prizes, plus giveaways from Lisle businesses, including: Chicago Cubs and Kane County Cougars baseball tickets and overnight stays at Lisle hotels.

Free attendee parking will be available in the Village's commuter parking lots, accessible from Burlington or via Spencer Street from Ogden Avenue.



Of all the things you wear,  
your expression is the most important.

# Steeple Run News



## August

- ★ New Student Registration is weekdays from 9:00 am – 2:00 pm at the District Administrative Building, 203 W. Hillside Ave. (Next to the NCHS football Stadium). A certified birth certificate and 3 forms of proof of residence are required to enroll. For questions, call 630-420-6300.
- ★ Steeple Run School Office Hours: June 17 – July 22, Wednesdays from 10:00 am – 12:00 pm; August 7 – August 12 from 8:00 am – 12:00 pm; August 13 – August 18 8:00 am – 2:00 pm; August 19th regular hours resume – 7:30 am – 3:00 pm.
- ★ New Student Tours are August 11 at 10:00 am and 6:00 pm in the school lobby.
- ★ Class Lists posted Friday, August 14 at 5:00 pm on the grade level windows.
- ★ Pre-ordered Supply Packets can be picked-up August 14 from 5:00 pm – 7:00 pm in the gym. Kindergarten supplies will be delivered in bulk directly to the classrooms.
- ★ WELCOME BACK SUPERSTARS! Classes for 1st – 5th graders only resume Wednesday, August 19 8:15 – 2:30. Don't forget to bring gym shoes and lunches!
- ★ Welcome Back Coffee for all parents is August 19th from 8:15 am until 9:30 am in the gym.
- ★ PM Kindergarten "Sneak Peak" August 19th.
- ★ AM Kindergarten "Sneak Peak" August 20th.
- ★ Classes for Kindergarteners start Friday, August 21. AM 8:15 – 10:45 (students should arrive by 8:05). PM 12:00 pm – 2:30 pm (students should arrive by 11:50 am).
- ★ School Store hours are 8:00 – 8:30 am on the stage during the first week of school and the 1st Thursday of the month.
- ★ Curriculum Nights (parents only) are as follows:
  - o Tuesday August 25: KAM 6:00 - 7:00 pm; KPM 6:30 – 7:30 pm; 1st 6:30 – 7:30 pm; 2nd 7:00 – 8:00 pm.
  - o Thursday August 27: 3rd 7:00 – 8:00 pm; 4th 6:30 – 7:30 pm; 5th (Including Outdoor Ed Meeting) 5:30 -7:00 pm; 4th & 5th Honors Math 7:00 – 8:00pm; 4th & 5th PI 7:00-8:00 pm; 4th & 5th PI Plus 6:00 – 7:00 pm.
- ★ LOOKING AHEAD TO SEPTMEBER: There will be no school on Sept. 7th in honor of Labor Day. 5th Grade Outdoor Education Days are scheduled for Sept. 8th & 9th. School Pictures are Sept. 10th.

## 2009 College Square Day at the College Square Mall



Everyone is invited to join us for a day of fun at the College Square Mall. We will be having mall specials throughout the day. We also have exciting events planned from 10am-4pm. There will be pony rides and moon jump for the kids. We are also having a blood drive. Lifesource Mobile Unit will be there for the day, along with the Lisle-Woodridge Fire Dept. There will be a DJ playing all

the top hits, and contests throughout the day, giving everyone a chance to win "Mall Bucks" that are redeemable at any of the mall stores.

The big event will be a bags tournament throughout the day with cash prizes for the winners.

We are also having a craft fair with local crafters so you'll

want to come see all the great things they will have to offer. There will be something for everyone, so we hope to see you there, Saturday, Aug 15th from 10am-4pm. Donations are being accepted and will be distributed to local charities in needs.

For information regarding participating in the craft show, please contact Sam Cieplak at Pakmail of Lisle, 630-355-5020.

If you are interested in setting up a booth to promote your business, please contact Jim Burner at Edward Jones, 630-420-9040.

Please visit our website for updates at [www.collegesquarelisle.com](http://www.collegesquarelisle.com)

Any additional questions or if you wish to email us, please do so at [collegesquareday@gmail.com](mailto:collegesquareday@gmail.com)

See you there for great deals and great food!

## Green Trails Classified Ads

**Green Trails residents may submit ads and articles for publication in the Pathfinder free of charge according to approved guidelines:**

1. Ads must be received by the editor on or before the 12<sup>th</sup> of each month to be considered for publication. Ads may be sent by e-mail or by USPS. If sent by USPS, the ads must be typed or printed on 8 ½ X 11 paper.  
(2030 Carriage Hill Rd. - Lisle)
2. Ads must include the residents GTIA Account Number (as found on their Pathfinder label), name, address, telephone number and/or e-mail address.
3. Ads will be limited to 25 words.
4. Renewal ads must be re-submitted each month according to these guidelines.
5. Ads that do not meet policy guidelines will not be printed.
6. Ads for businesses will not be accepted for free publication.
7. First-time classified ad submissions will take priority over repeat ads, and the editor will have discretion over revisions to ads.

### DISCLAIMER

The Green Trails Improvement Association does not endorse any of the products or services listed in the Pathfinder.

### SUBMITTING CLASSIFIEDS

- Classifieds must be renewed monthly via e-mail with "pathfinder" in the subject line.
- No phone-in ads or phone renewals.
- Classifieds should be sent to Beth Haugeberg at: [pathfinderads@greentrails.org](mailto:pathfinderads@greentrails.org).

### FOR SALE:

- Coleman Powermate Portable Generator (PM0606750), paid 1400.00. Used twice, excellent condition, asking \$800.00, ideal for home backup power. 6750 watt portable generator w/12HP Yamaha OHV engine, 7 gallon fuel tank provides up to 10 hours run time @ 50% load. Call 630-292-5572.
- Weber Performer Touch-N-Go Grill, good condition, Touch-N-Go gas ignition system ignites charcoal briquets with push of a button. CharBin storage container keeps up to 20 pounds of charcoal dry. \$40.00. Call 630-292-5572.
- Little Tikes Playhouse - for indoor or outdoor use, good condition, \$40.00. Call 630-292-5572.
- Altec 620b speakers (Google for info) - \$500; HeathKit AA1640 (250+ watt stereo power amp, Google info) - \$500; 25" Sony KV 25XBR color TV/monitor w/spkr - \$30; JVC DVD player - \$25, Yamaha AVC-50 control head/amp - \$40; 15" computer CRT monitor - \$25. Call 630-750-5535.

- Student desk, hutch w/light, chair & twin headboard (cherry wood finish). \$150.00 OBO. Call Kathy at 630-717-6176.
- \$25 OBO - One Birdcage for sale, 12x18x20 inches, shaped like a house; Suitable for a single small bird (parakeet etc); Excellent Condition; I live in Tyrnburly subdivision of Green Trails. Phone: 630-357-9099.
- A School Chair/Desk for Sale; Desk has a storage box under it; suitable for a child of age < 10 yr; \$15 OBO, In Tyrnburly subdivision; call 630-357-9099.
- Authentic early 1900's child's school desk. Fold up seat, ink well on desk. Charming wrought iron and pine, sturdy & in very good condition . \$35. 630-369-5660.
- Body Flex inversion table, model number IT 9000b, Essentially new. \$95. Carol 630-369 5660.
- Hanging double pendant light & ceiling fixture. Very good condition. Attractive polished brass with white umbrella style glass pendants. Total dimensions: 43"L x 19" W; chain length 68". \$75 Carol 630-369 5660.
- Bedroom set: solid oak, very good condition, secure construction: 2 bunk beds-also useable as twins seperately, 2 under bunk storage drawers, a ladder, 2 guard rails, 2 mattress supports, 3-drawer dresser, 4-drawer desk and hutch with 2 door cabinets. All \$560.00; or bunks only if desired. Carol 630-369-5660.
- For Sale: Steelcase Executive Desk and Credenza. Both \$150. Black base with chrome legs & handles, dark walnut top. Desk measures 36" X 72", credenza 20" X 60" Call Wendy 630-305-9326.
- 2002 Chevy Cavalier LS. 2-door, silver, auto trans, sun roof. 104,000 miles. \$2,700.00 Call Michelle 630-848-0331.
- 1995 Ford Thunderbird LX. 2-door, grey, auto trans, 8 cyl. 155,000 miles. \$500.00. Call Michelle at 630-848-0331.
- Gemeinhardt 2SP Flute - Used. Silver Plated, Offline G key, plays, in good condition. Includes right thumb 'Bo Pep' finger rest. In addition to the added comfort, it enhances the flutist's security, balance and control. Includes case and cleaning rod. \$125.00. Contact Karen or Kelly at 630-305-0653
- Will sell baby items in a great condition: baby swing, bouncy chair, bath tub & clothes for 0-3m. 630-951-9869.
- Sears 18.2 cf Refrigerator-Freezer with auto defrost and top-mounted freezer. Less than 2 years old. Asking \$350.00 Call Dave/Sue at 640-369-8787.
- Jennair stainless steel propane (tank not included) barbeque, \$50.00 as is. 630-470 9237.
- Rhode Gear Bike Trailer. Holds two children. \$100; InStep jogging stroller w/ handbrake. \$50 both well-kept. 630-718-9032

### SERVICES:

- Seams coming apart or pants too loose. Get them repaired at a reasonable rate. I live in Tyrnburly subdivision. call 630-357-9099.

(please see *Classifieds* continued on page 9)

*(Classifieds, continued from pg 8)*

- Experienced teacher and tutor for children and adults. Providing multisensory instruction (Wilson Rdg & Lindamood Bell) in reading, spelling, and math for K-8th grade students, written language expression skills for students in grades 3-12, and GED for teen-agers-adults. Screening for dyslexia. References. Call Joan, 630-416-6101.
- HOUSECLEANING- So Clean So Green! A local eco-friendly housecleaning service that cleans with non-toxic products. Experience the difference! Call Ann Marie 847-828-6789.
- Tutoring: Kindergarten through College. ALL Subjects, test preparation and study skills. Screening for Dyslexia and ADD. Emphasis on Reading, Math, Writing and related subjects. ACT/SAT, etc. Contact Cheryl 630-420-1033.
- Home repairs, remodeling, and room additions. Handy man services - also painting, electrical, plumbing, carpentry, etc. Specialize in kitchens, baths, basements, and additions. Quality work at reasonable prices. Contact Gary 630-420-1033.
- \$50 FREE JEWELRY! Hi, I'm Jill your neighborhood lia sophia advisor. Call me to host a fabulous party and I'll give you \$50 in FREE JEWELRY plus all your hostess credits. I accept direct orders too! 630-848-1140 or jill4jewels@comcast.net.
- ALL ABOUT SPOT: Certified dog trainer and life-long animal lover offering dog walking, pet sitting, and basic obedience training. Call ALL ABOUT SPOT 630-638-2477.
- Bathroom and Kitchen Remodeling Carpenter since 1993. I also install electric and plumbing fixtures, marble, trim and more. Quality work, reasonable rates, fully insured. Green Trails References available. Call Ray 630-717-8727.
- Math Tutor: M.A. in Mathematics, B.S. in Mathematics. Minors in English and Education. Tutoring experience includes math K-Calculus I, K-12 Reading and Language Arts, all ACT and SAT areas. Call 630-717-0812.
- Grass Cutting. Green Trails resident college student will cut your grass, yards east of College only. I have equipment, experience, and references. Call 630-428-3985.
- LICENSED CHILDCARE PROVIDER has two rare openings mid August for a child aged 6 weeks and older. CPR/1st Aid certified, nutritious meals and snacks, Preschool program, and excellent long term references. Call Sandy at 630-416-1274.
- "N ANGEL"-vacation? Weekend away? Work too much? Pet lonely? Have pet problems? Your house (maybe mine). Experienced animal lover. Honest and sincere. Have worked with and own many type of animals. I know what I'm doing. Call for info., I will be happy to meet with you and your pet(s). 630-305-9514.

**FOR RENT:**

- Fall time in Michigan! Only 1.5 hours from Lisle, you can enjoy this newly constructed rental home! Our property backs up to the Warren Dunes State Park, is only a few

blocks from the lake and is great for enjoying fall colors! Screened in porch and fire pit in the backyard make for great family time. Rent for a weekend or an entire week! Sleeps up to 17 people and is great for multi-family get aways! Wineries, golfing, fun park, antiquing, new casino, shopping and much more all close by! Visit [www.warrendunesvacationhome.com](http://www.warrendunesvacationhome.com) or call Scott Peterson at 630-235-2135.

- LUXURIIOUS Mountain Condo, Winter Park, CO. Breathtaking views from your deck overlooking the Continental Divide. Fully furnished incl full kitchen, fireplace, and hot tub. Sleeps 4. Mountain biking, whitewater rafting, horseback riding, hiking, fishing, alpine slide. 50% off rates. Call 630-460-0010.
- VERY NICE multi level townhouse in Green Trails. New carpet and hardwood, 2BR, 2Baths, family room, stainless appliances, basement, W/D, garage and pool access. Can be rented furnished. No pets. 630-460-0010.
- Beautiful 2-story house in Green Trails. 4 bedrooms, 3.5 baths, 2 car garage, complete finished basement, 203 school district, close to park and playground, bus to train station. No smoking, no pets. \$2500/month. 630-416-8060.
- Fully furnished two bd rm condo in Orlando. Dec 19-26. Sleeps six. One Mile to Disney World. Resort offers a tropical pool, whirlpool spa, tennis, children's pool, nature path, shuffleboard, game room, barbecue and picnic area, and the poolside Kenya Cafe. If you are serious, we will make a deal. Please call 630-778-1129.

**NOTICE:**

- Thursday morning women's bowling league looking to attract new members. We are a non-sanctioned social league comprised of ladies of all abilities and generations. We bowl at Lisle Lanes, and will begin our new season on August 20. Our calender corresponds to the District 203 calendar. Come join us and meet new friends. Interested contact Kate Buck at 630/416-3092.
- Two mommies of 12 and 15 month olds want to start a weekly play group for stay at home moms. Day/time TBD. Contact Jennifer at 630-428-4769 or jennifer327@comcast.net.
- Recently organized Home Bible Study meets on Wednesday nights at 7:30 p.m. in Steeple Run, and the first Sunday of the month at 5:00 p.m. in Green Trails. Topics include "How to Enjoy the Bible," "How to Receive Answers to Prayer," and "Keys to Understanding Scripture." Newcomers are welcome, no experience necessary. For more information please contact Green Trails resident Sue Shannon at (630) 717-7923.
- "Good Rockin' Tonight" Family Dance will be held on Saturday, September 19, from 7:00 p.m. to 10:00 p.m. at Grace Christian Fellowship at 1701 Quincy Avenue, Suite 17, Naperville, IL 60540. Dance the night away with "Fellow Heirs," a good rockin' band of Christian musicians. Free admission - all ages welcome - FUN for all! For more information contact Tom Shannon at (630) 717-7923.

*(please see Classifieds continued on page 10)*

Queen of Tarts: Flaky pastry and crunchy streusel frame lush summer raspberries!

Raspberry Crumble Tart (6 - 10 servings)

- |  |                        |
|--|------------------------|
| 2-1/2 C all-purpose flour                | 5 - 7 Tbsp ice water   |
| 3/4 C cold unsalted butter, cut in cubes | 3/4 C almonds, chopped |
| 1/4 cup cold vegetable shortening        | 3/4 C sugar            |
| 1/2 tsp salt                             | 6 C fresh raspberries  |
| Whipped cream garnish                    |                        |

Dough:

Blend together flour, butter, shortening and salt in a bowl with a pastry blender until mixture resembles course meal with some small pea-size butter lumps. Transfer 2 cups mixture to a bowl and drizzle 4 Tbsp ice water evenly over it (reserve remaining mixture). Stir gently with a fork until incorporated. Squeeze a small handful of dough; if it doesn't hold together, add more ice water 1/2 tablespoon at a time, stirring until incorporated. Turn out dough onto work surface and divide into 4 portions. With heel of your hand, smear each portion once or twice in a forward motion to distribute fat. Gather all dough together with pastry scraper and press into a ball, then flatten into a 5" disk. If dough is sticky, dust lightly with additional flour. Wrap disk in plastic wrap and chill till firm, at least 1 hour. While dough chills, make topping. Add almonds and sugar to reserved dough mixture in a bowl and rub together until some large clumps form.

Assemble pie:

Put a large baking sheet on oven rack in lower third of oven and preheat oven to 375 degrees. Roll out disk of dough into a 14 x 13" rectangle on a lightly floured surface with a lightly floured rolling pin. Fit into 10" round tart pan with removable bottom (or 11 by 8" rectangular tart pan) and trim excess dough, leaving a 1/2" overhang, then fold overhang under pastry and press against rim of pan to reinforce edge. Fill shell with berries and sprinkle evenly with topping. Bake tart in pan on baking sheet until topping and crust are golden and filling is bubbling, about 55 to 60 minutes (loosely cover with a sheet of foil after 30 minutes to prevent overbrowning). Cool in pan on a rack 20 minutes, then remove side of pan and cool tart completely, about 45 minutes. Like gilding a lily, before serving, garnish with a few raspberries and whipped cream!

*(Classifieds, continued from pg 9)*

• Garage Sale - August 29, 8am-2pm. A variety of stuff- kids, books, houseware, women's clothes, linens - call if you're looking for something--I've probably got it !!!!! Jeri 630-420-2601.

**FREE:**

• Free ping-pong table. Call 630-428-3787 and leave a message.

**FOUND:**

• Found on Trinity Drive silver hand set for AT&T phone call 630-369-4589.

**WANTED:**

- Outdoor, plastic play house. Call Michelle at 630-848-0331.
- Wooden playard/playpen. Call 630-848-0331.
- An armoire for a college student. Call Michelle at 630-848-0331.
- Plastic, baby swing to hang in a tree. Call Michelle at 630-848-0331.



# Highlands School Happenings

## August

- ⇒ New Student Registration is weekdays from 9:00 am – 2:00 pm at the District Administrative Building, 203 W. Hillside Ave. (Next to the NCHS football Stadium). A certified birth certificate and 3 forms of proof of residence are required to enroll. For questions, call 630-420-6300.
- ⇒ New Student Tours are August 12th at 10:00 am in the school lobby.
- ⇒ Class Lists posted Friday, August 14th at 5:00 pm on the grade level windows.
- ⇒ WELCOME BACK! Classes for 1st – 5th graders only resume Wednesday, August 19 8:15 – 2:30. Don't forget to bring gym shoes and lunches!
- ⇒ Kindergarten "Preview Day" August 19th.
- ⇒ Kindergarten "Preview Day" August 20th.
- ⇒ Classes for Kindergarteners start Friday, August 21. AM 8:15 – 10:45 (students should arrive by 8:05). PM 12:00 pm – 2:30 pm (students should arrive by 11:50 am).
- ⇒ Home and School Executive Board will be meeting at 8:30 AM on Friday, August 21st.
- ⇒ Spirit Wear Sales begin August 24th.
- ⇒ Curriculum Nights (parents only) are as follows:
  - o Tuesday August 25: Grades 4, 5, PI+, HM and PI
  - o Thursday August 27: Grades K, 1, 2, 3
- ⇒ August 28th is HOM immersion day for grades 3, 4 & 5.
- ⇒ LOOKING AHEAD TO SEPTMEBER: There will be no school on Sept. 7th in honor of Labor Day.



For success, attitude is equally as important as ability.

### Organizing Tip of the Month

courtesy of Margo MacDougall  
Sussex, New Brunswick, Canada  
and [www.getorganizednow.com](http://www.getorganizednow.com)

I don't have a working scanner right now but I do have a digital camera. I discovered the other day when I was going through my 'Dream Decorating' files that I can take digital photos of the magazine or book pictures I have torn from magazines, upload them to my computer, and organize them electronically.

I have already bought the book or magazine and I'm using these for my own purposes only, so I understand that in Canada I'm not infringing on any copyright laws. I just need to be careful with glossy pictures so that the flash doesn't cause a glare. I can see reams and reams of paper going to the recycling plant!



Green Trails residents enjoy the fishing at  
College Road Park ponds.  
Photo Credit: Beth Haugeberg

**Not getting what you want is sometimes a wonderful stroke of luck!**